



SmartOne

A Professional Unified Communications Solution



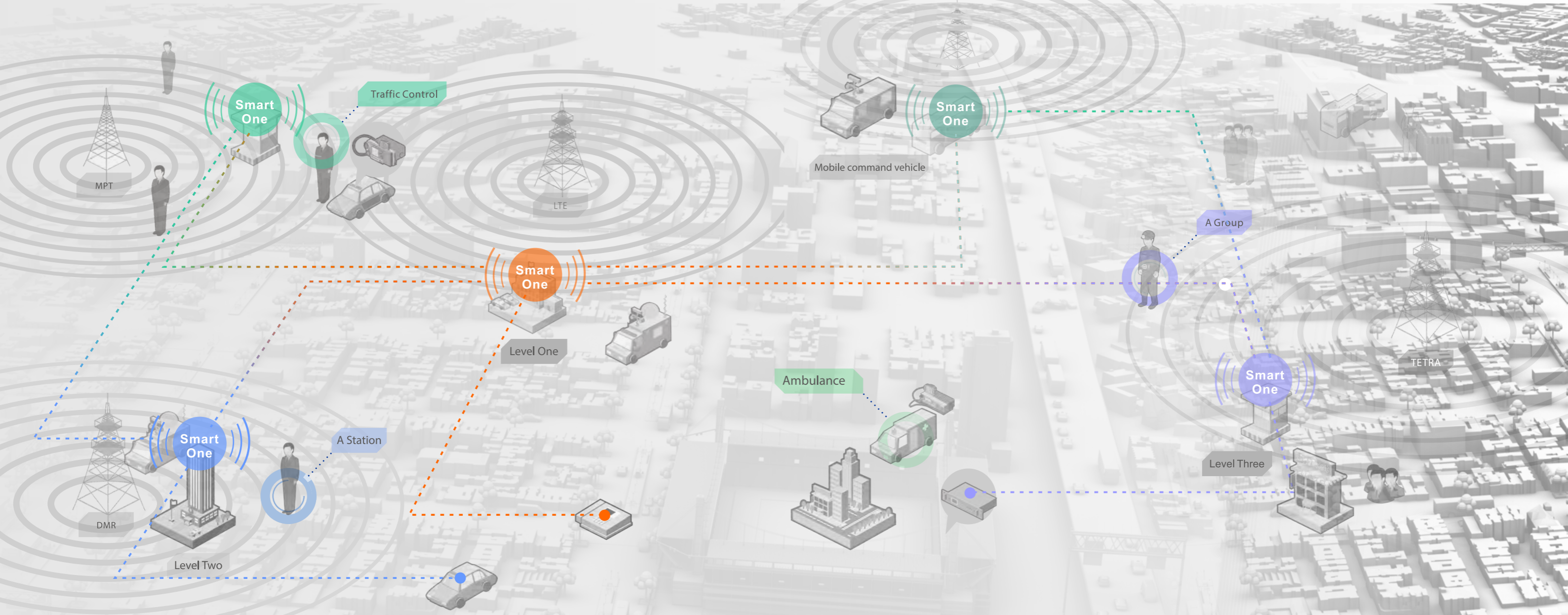
Hytera Communications Corporation Limited

Address: Hytera Tower, Hi-Tech Industrial Park North, Beihuan Rd.,
Nanshan District, Shenzhen, China
Tel: +86-755-2697 2999 **Fax:** +86-755-8613 7139 **Post:** 518057
Http://www.hytera.com **Stock Code:** 002583.SZ



Hytera retains right to change the product design and specification. Should any printing mistake occur, Hytera doesn't bear relevant responsibility. Little difference between real product and product indicated by printing materials will occur by printing reason.

HYT, Hytera are registered trademarks of Hytera Communications Co., Ltd.
© 2017 Hytera Communications Co., Ltd. All Rights Reserved.



INTRODUCTION

SmartOne is a professional unified communications solution that integrates voice and video communications. It is based on soft-switching technology that provides integration between PMR (Private Mobile Radio) networks, public telephone systems, video communication system, etc. And it allows for interconnected and unified dispatching across multiple technology standards whenever and wherever needed.

BENEFITS

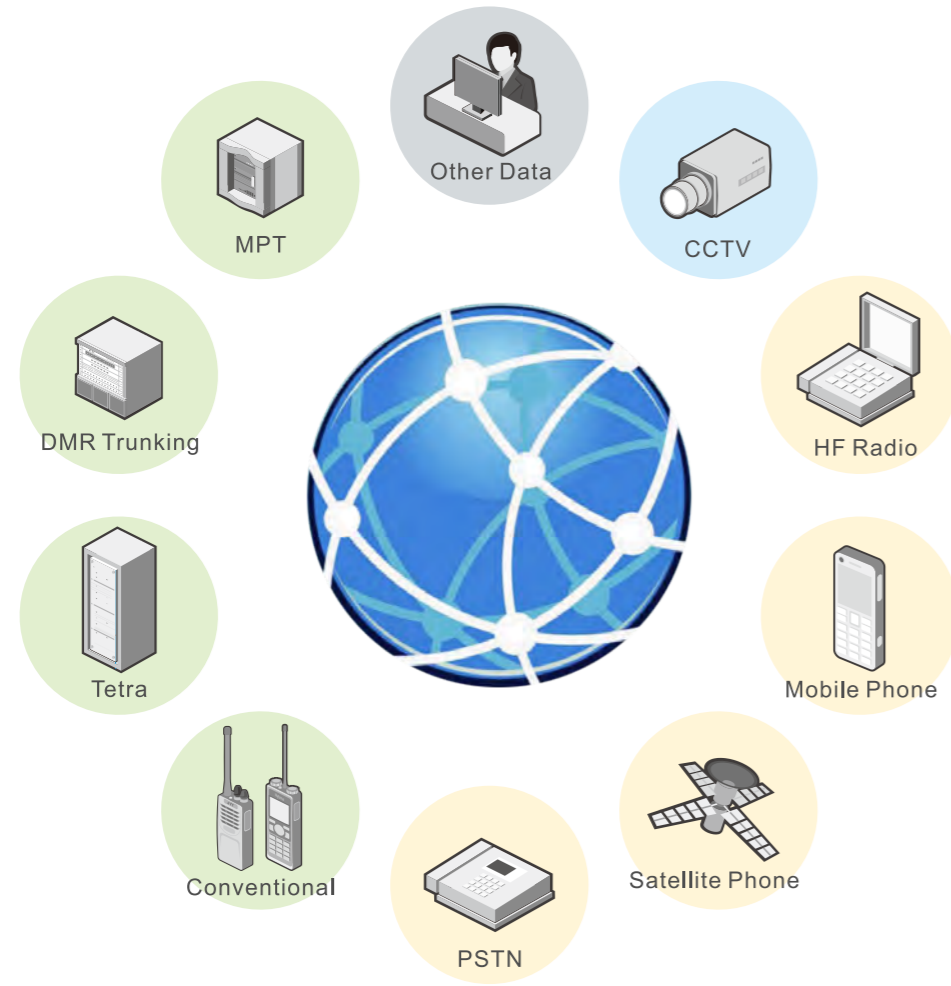
- Secure and Reliable
- Priority Dispatch
- Data Logging
- Flexible Conferencing
- Monitor Communications

Application Layer	PC Dispatch Console		DS-7000 Console		Tablet Dispatch Console		Mobile Dispatch
	Application interface support (API/ActiveX/Web service)						
Platform Layer	Dispatch Server	Business Sever	Media Sever	Location Server	Recording Server	Resource Server	BackupServer
Server Access layer	Voice Interface		Video Interface		Information system Interface		
	Analog Conventional	Public LTE	CCTV	Video Conference	GIS system	Duty management	
	PMR Narrowband	PSTN	Public LTE Video	PMR LTE Video	Incident Data	Police information	
	PMR Broadband	...	Other Camera	

SOLUTION HIGHLIGHTS

Comprehensive Convergent Communications

- Supports integration with PMR narrowband and broadband trunking and conventional communications systems.
- Supports PSTN, PABX etc.
- Supports integration ... supports VOX, noise cancellation technology and more.

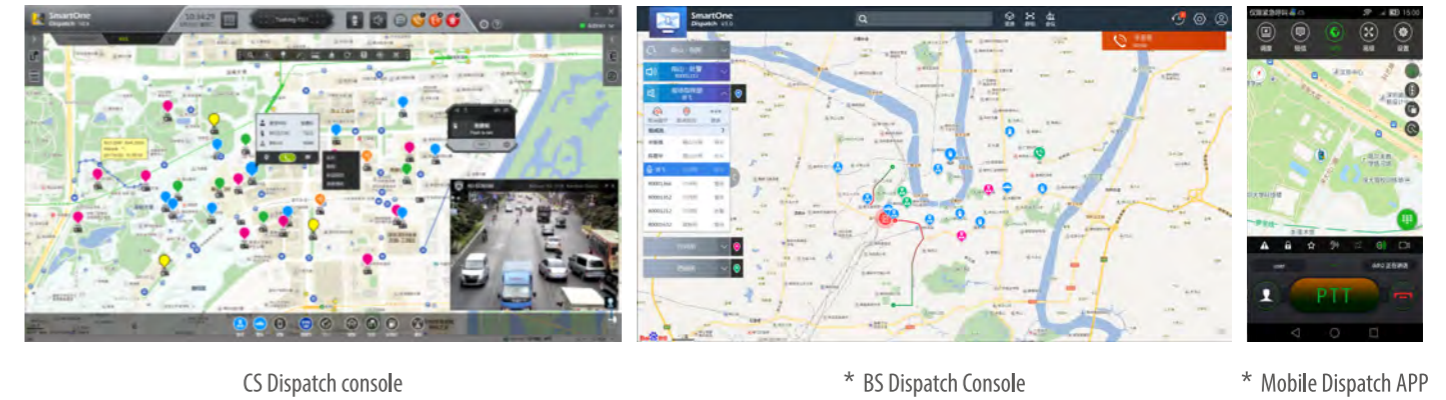


Mature Architecture, Safe and Reliable

- Supports redundant operation to ensure seamless fail over for reliable 24/7 communications
- Supports network security
- Supports multi-level platform networking, decentralized networking technology to allow the platform to establish a wide-area command and dispatch network.

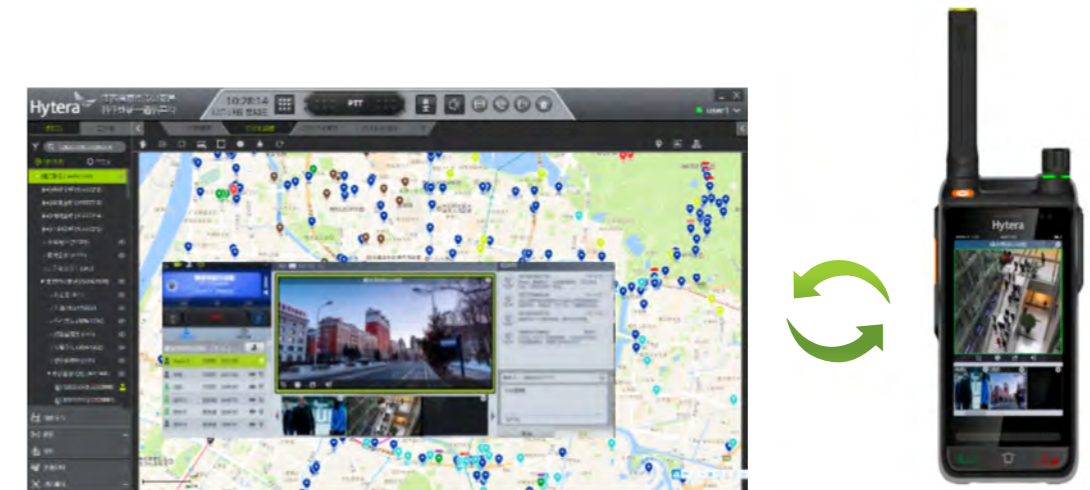
Multiple Interfaces, Easy Dispatch

- Multiple dispatch console supported: PC workstations, laptops, tablets, mobiles etc.
- Supports mobile and decentralized dispatch work models
- Provides for a full range of command and dispatch working scenarios: emergency call, conference call, multi-media meetings, roll-call, etc.
- The open interface provides multiple ways to access the platform. For example: Web Service, ActiveX, API and Database options.



Intelligent Analytics and Visual Command

- Smart video processing technology provides video transfer, screen melting, video stitching, etc.
- Smart video analysis technology allows the system to structuralize video and tag specific units in the video stream. It also supports fast calling features to all visual areas.
- Supports video upload, download, transfer and multimedia messaging between multiple communication systems.



Mobile Dispatch

- Supports flexible and mobilize deployment of Platform, gateway and dispatch console;
- Supports dispatch and application on 4G, satellite network or other forms of network.

APPLICATION

Voice Conference

- Voice calls involving two or more members in the same system or in different systems ;
- The dispatcher initiates a voice conference or the terminal calls the conference number to initiate a voice conference.



Map Application

- Supports maps such as Google, MapX, OpenStreetMap, PGIS;
- Classification terminal display and customized icons;
- Click-to-call, circle selected call, GPS tracking and cross-over alarms.



Multimedia Conference

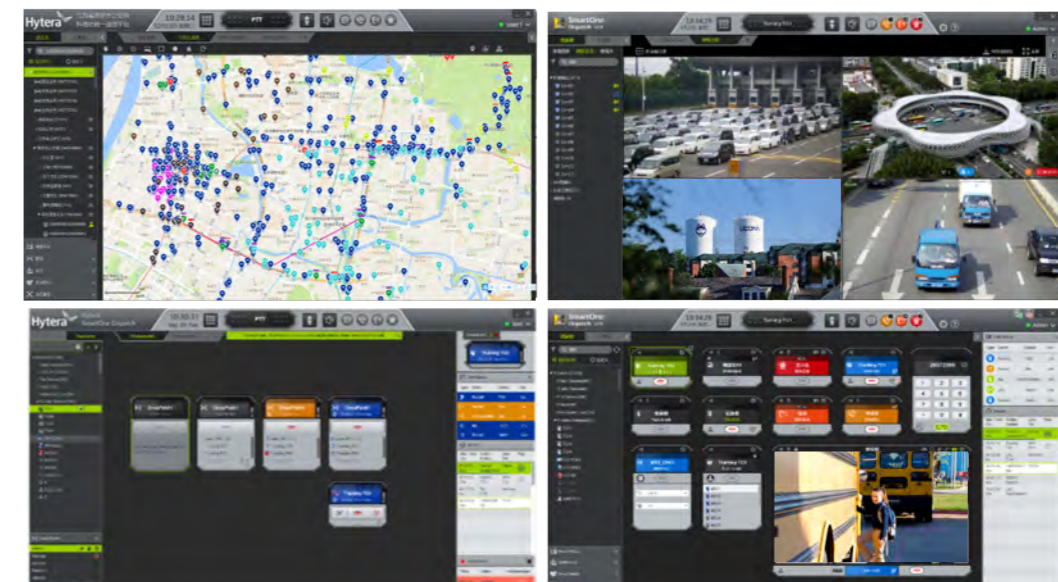
Multimedia calls involving two or more members in the same system or in different systems:

- A video conference can only be initiated by the dispatcher. The call will end after the dispatcher exits or all the members exit;
- Conference control function;
- Video push and forward function, support the multi-screen function.



Customized Interface

- The dispatch client supports kinds of plug-in panels, such as dispatch, SMS, clock, web page, map, image, etc;
- Multi-page tags, user can switch between different functions quickly using the tag interface.
- Multi-screen distribution display.



SYSTEM COMPONENTS

Standard Dispatch Station

- Graphical operation based on Windows desktop
- Voice and video dispatch functions
- Map dispatch function
- Multi-channel monitoring, call recording, display and playback
- Multiple function plug-in and customizable dispatch panels



Tablet Dispatch Station

- Based on Windows system Tablet
- Support Wi-Fi, 4G access
- Voice and video scheduling functions
- Multiple function plug-in and customizable dispatch panels



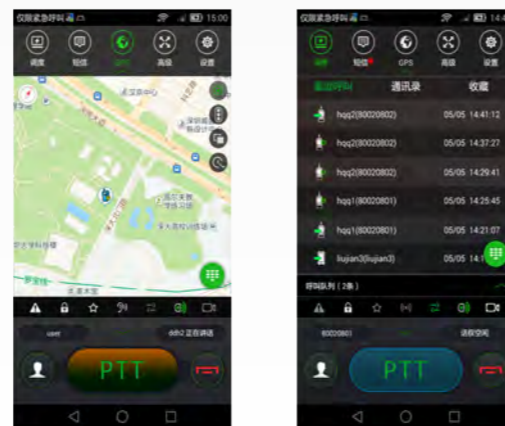
DS-7000 Dispatch Station

- 18.5 inch multi-touch capacitive screen, supporting touch operation
- Dual phone handle, dual SIP phone, external phone + dispatch phone
- The handle comes with a PTT button that allows fast operation
- Voice and video scheduling functions
- Agent management function
- Customizable dispatch panels



Mobile Phone Dispatch App

- Based on the Android operation system
- Voice call, video call
- Map-based click call, circle selected call
- Interoperability between mobile phone and private network terminal



DS-6610 VPUC

- 12 concurrent voice channel access: 8 for Radio Station, 2 for PSTN(1 for FXO, 1 for FXS), 2 for GSM
- Wi-Fi AP function
- Support Public 4G LTE data transmission
- Ethernet interface: 2 x RJ45, 100/1000M Base-T
- Power : DC: 12VDC, 1.5A; AC: 100 ~ 240VAC, 50 ~ 60Hz
- Operation temperature: -20°C ~60°C
- Storage temperature: -20°C ~ 60°C
- Humidity: 10 ~ 90% no coagulation

DS-6610 MPUC

- Access of 2 Vehicle-mounted Radio Stations
- Access Radio Station from Hytera and other main stream vendors
- 2 x 100/1000M Base-T Ethernet Interface
- Power source: 12VDC, 1.5A
- Operation temperature: 0° ~ 40°C
- Storage temperature: -10° ~ 60°C
- Humidity: 10 ~ 90% no coagulation
- Power supply standard: China, U.K., U.S., Europe, Australia

Media Server

Hardware Configuration

- 2 x Intel Xeon E5-2650 v4 2.1GHz
- 4 *16GB RDIMM, 2400 MT/s, Dual array, x4 bandwidth
- 2 *600GB 10K RPM SAS 6Gbps, 2.5 inch hot swappable
- 2 x Intel VCA



Software performance

- 64 x Conference room
- 32 parties per room
- 32x1080P, 64x720P, 128x D1/VGA
- Support G.711, G.729, H.264 media coding

FEATURE

Category	Feature Description
Call Features	Individual Call / Group Call
	Video Call / Video Pull / Video Push
	Emergency Call / Priority Call / Broadcast Call
	Ambience Listening
	Dispatcher Intercom
	Crosspatch
	Simul-select
Supplementary Features	Monitor(voice, text message, status message)
	DGNA
	Group Patch(voice, text message)
	Interrupt
	Override
Message Features	Text Message / Status Message / Callback Message
	Emergency Alarm
	Message Template
	Text Messages between Dispatchers
	MultiMedia Messages between Dispatchers

SYSTEM SPECIFICATION

Item	Specifications
Terminals Number Support	Maximum 100,000 terminals
Concurrent Voice Support	2,000 channels
Concurrent Video Support	125 channels (1080P)
Media Sever Process abilities	1080P: 16Channels/VCA card D1: 48 Channels/VCA card
Terminals Monitor Per Console	128
Concurrent Voice Per Console	30 Channels
Dispatch Console	Support up to 500 consoles
Terminal location acquires	Less than 300 per second
Service Access Point number(SAP)	100 SAPs available
Crosspatch	Maximum 64 meetings
	32 members per meeting
Multimedia Conference	Maximum 64 meetings
	32 members per meeting



Hytera SmartOne is a new generation of unified communication solution that realizes multi-system inter-connection and unified dispatching to ensure timely information sharing for decision making and quick transmission of commands.