



# DMR Ad-Hoc Dual Channel Repeater E-pack200

Dual-path communication solution  
31-repeater networking  
Flexible and rapid deployment

Long-lasting battery  
Real-time and precise positioning  
Wireless programming



[www.hytera-europe.com](http://www.hytera-europe.com)





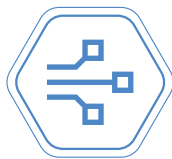
Hytera E-pack200 is a huge advance in the wireless ad hoc network (WANET) repeater portfolio, designed to provide dual communication paths simultaneously and precise positioning services, providing an all-round networking solution for those engaged in firefighting, disaster relief, VIPs security, public safety management, and more.

The E-pack200 repeater can operate on custom frequencies within the preset frequency range, thus improving the efficient usage of channel resources. Incorporated with precise positioning technology, the E-pack200 repeater can periodically report its location data.



### Fast Deployment Create a network in seconds

- In emergency situations, every second counts. The E-pack200 repeater supports push-to-start for quickly and automatically establishing an independent network after power-on, so as to efficiently extend radio coverage.



### Flexible Networking Topology Overcome dead spots

- Up to 31 E-pack200 repeaters can be deployed on the site to form a chain, mesh, or hybrid network, which can effectively eliminate dead spots in tunnels, high-rise buildings, or underground to ensure seamless communications.



### Dynamic Design Supports Dynamic Network

- The E-pack200 repeaters still provide reliable RF coverage during rapid movements. When they are moving randomly, the network topology changes accordingly.
- In the peer-to-peer network, all E-pack200 repeaters are equal, and freely joining or leaving this network.



### IP Multisite Connect Extend Radio Coverage

- With the IP Multisite Connect technology adopted, the E-pack200 repeaters interconnect with each other, establishing multiple inter-frequency or intra-frequency ad hoc networks in a large area.



### LTE Link as Backup Offers an always-reliable Communication Solution

- When the PMR network is down, the E-pack200 repeater with a SIM card can keep repeating calls or data over the LTE network. Also, it can access the command and dispatch system.



### Unified Command and Dispatch Link people and location

- Serving as a link, the E-pack200 repeaters can work with the command and dispatch system, helping the dispatcher view location and status of the radios on the map, receive alarms, and more.



### Remote Management Keep networking status always known

- The ad hoc network consisting of the E-pack200 repeaters can be monitored by the network management system. The networking topologies and RSSI of the E-pack200 repeaters are visualized in real time.



### Wireless Programming Reduce toil and trouble

- The E-pack200 repeater can be programmed by the network management system over the WLAN. Take the hassle out of programming via a cable, and minimize downtime in the field.



### Interconnection Connect to multiple systems

- The E-pack200 repeaters help the portable radios to access the digital trunking, digital conventional, analog conventional, and more systems, playing an important role in establishing a united commutation system.



### Open API's Facilitate third-party applications

- The E-pack200 repeater provides open API's, which facilitate the development of third-party applications according to actual industrial needs. This helps enrich the communication solution.




### Data Encryption Protect data and devices

- The E-pack200 repeater has multiple security mechanisms such as authentication, software and hardware encryption to protect the data and privacy. It can **also** be disabled temporarily or permanently through the dispatch and command system to prevent unauthorized access.



## At a Glance



**> More antennas than you see**

- Visible dual narrowband antennas
- Built-in LTE antenna, WLAN antenna, and GPS antenna

**> Purpose-built design**

- Sleek form factor with aluminum alloy housing
- Good tactility with plastic on both sides
- High-performance cooling with large-area heat sink fins

**> Rugged design**

- Waterproof and dustproof: Ip67
- Operating temperature: -30°C to 60°C
- Shock and vibration: MIL-STD-810 C/D/E/F/G

**> Easy to carry**

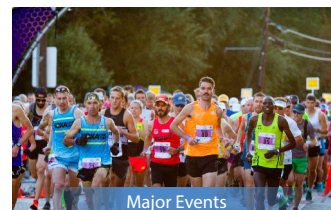
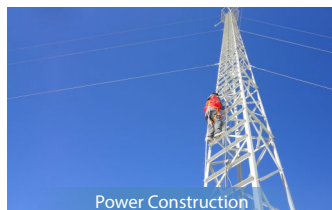
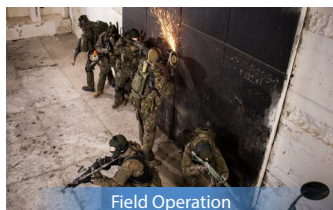
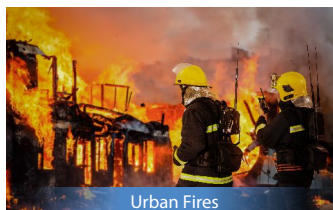
- Dimensions: 211 mm x 62 mm x 235 mm
- Weight: 3.1 kg

**> One-touch to view remaining battery power**

**> Various power supplies**

- 144 Wh battery: 9 hours at room temperature, push-pull design
- Mains power
- Vehicle power
- Solar energy

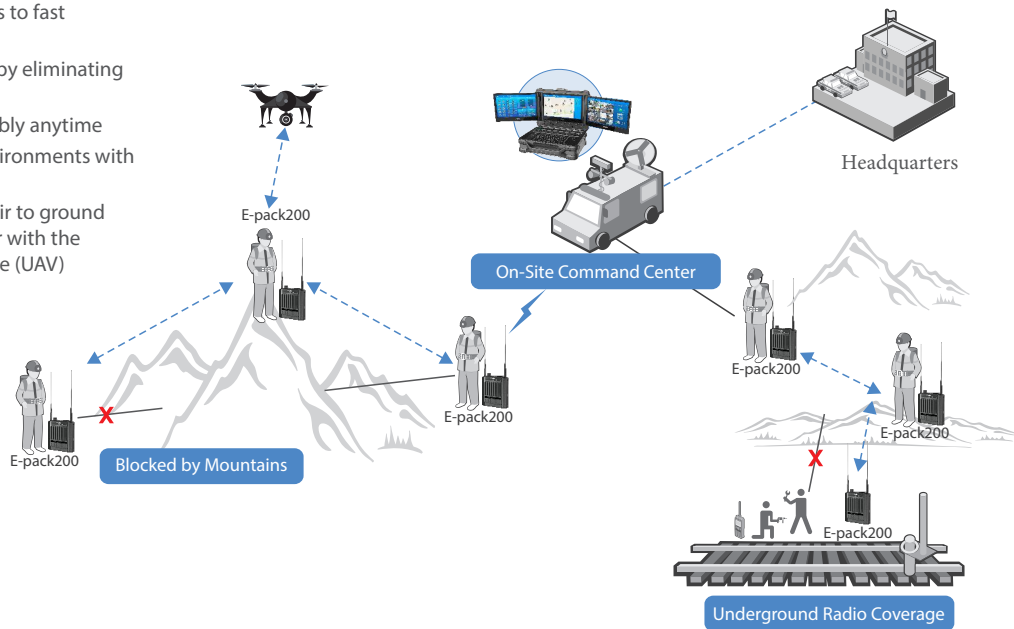
## Application Scenarios



# Cases

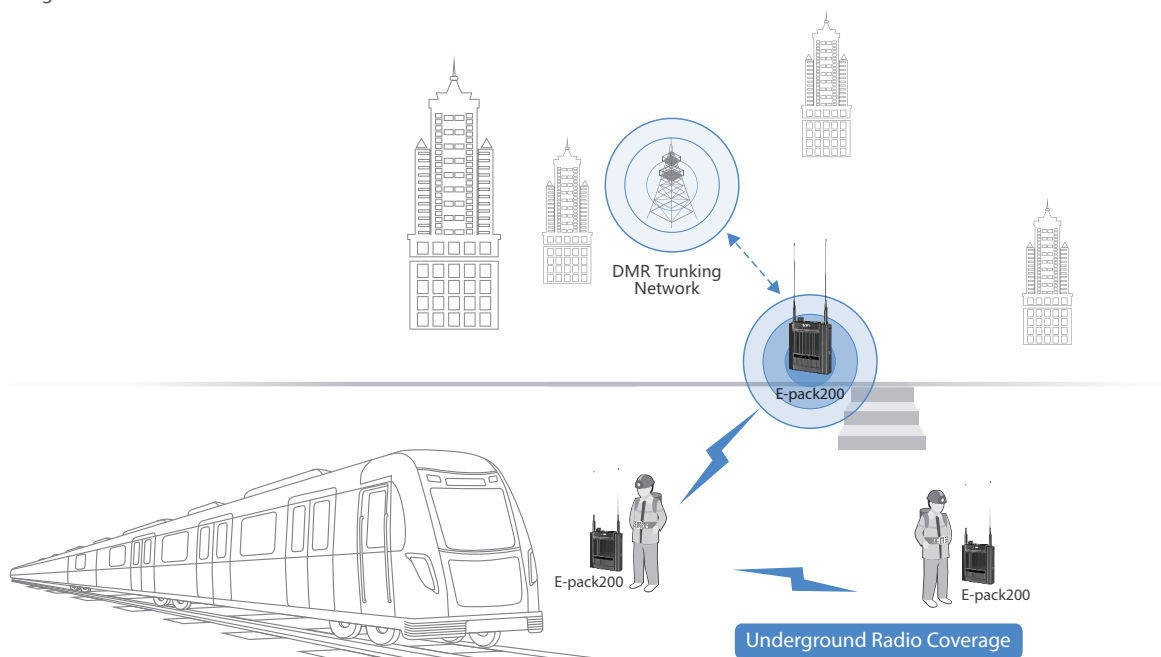
## Disaster Relief

- Save rescue time thanks to fast networking.
- Extend radio coverage by eliminating dead spots
- Adjust networking flexibly anytime
- Withstand extreme environments with an IP67 rating
- Provide network from air to ground when working together with the unmanned aerial vehicle (UAV)



## Underground

- Easy to hold and carry with lightweight design
- Quick deployment and interconnection
- Extend radio coverage and eliminate dead spots





**Hytera Communications Europe**

939 Yeovil Road, Slough, Berkshire, SL1 4NH

**info@hytera-europe.com | www.hytera-europe.com**



[www.facebook.com/  
HyteraEurope](https://www.facebook.com/HyteraEurope)



[www.linkedin.com/company/  
hytera-communications-uk](https://www.linkedin.com/company/hytera-communications-uk)



[www.instagram.com/  
Hytera.Europe](https://www.instagram.com/Hytera.Europe)



Subscribe on YouTube



Hytera reserves the right to modify the product design and the specifications.

In case of a printing error, Hytera does not accept any liability. All specifications are subject to change without notice.