



ADA-01 Wireless Audio Adapter

ADA-01无线音频适配器

SM27W1 Wireless Remote Speaker Microphone

SM27W1无线扬声器话筒

USER MANUAL

使用说明书

Preface

Thanks for your favor in our product. To derive optimum performance from the product, please read this manual carefully before use.

This manual is applicable to the following products:

ADA-01 Wireless Audio Adapter

SM27W1 Wireless Remote Speaker Microphone

Copyright Information

Hytera is the trademark or registered trademark of Hytera Communications Corporation Limited (the Company) in the People's Republic of China (PRC) and/or other countries or areas. The Company retains the ownership of its trademarks and product names. All other trademarks and/or product names that may be used in this manual are properties of their respective owners.

The product described in this manual may include the Company's computer programs stored in memory or other media. Laws in PRC and/or other countries or areas protect the exclusive rights of the Company with respect to its computer programs. The purchase of this product shall not be deemed to grant, either directly or by implication, any rights to the purchaser regarding the Company's computer programs. The Company's computer programs may not be copied, modified, distributed, decompiled, or reverse-engineered in any manner without the prior written consent of the Company.

Disclaimer

The Company endeavors to achieve the accuracy and completeness of this manual, but no warranty of accuracy or reliability is given. All the specifications and designs are subject to change without notice due to

continuous technological development. No part of this manual may be copied, modified, translated, or distributed in any manner without the prior written consent of the Company.

We do not guarantee, for any particular purpose, the accuracy, validity, timeliness, legitimacy or completeness of the third-party products and contents involved in this manual.

If you have any suggestions or would like to receive more information, please visit our website at: <http://www.hytera.com>.

Instructions

- Ensure the distance between the wireless remote speaker microphone (RSM) and the mobile radio is within 10 meters during operation.
- Use the wireless RSM only when traffic conditions permit safe use, and check whether local laws and regulations restrict the use of wireless RSM while driving.
- Do not use the mobile radio wireless kit during lightning storm to avoid malfunction.

Packing List

There are two kinds of delivery forms: one is that the package will contain all the items listed below; the other is that the package will contain all the items except for the wireless audio adapter.

Please unpack carefully and make sure all the items are received as per your purchase. If any item is missing or damaged, please contact your dealer.

No.	Name	Qty.
1	Wireless Remote Speaker Microphone (RSM)	1
2	Wireless Audio Adapter	1
3	USB Data Cable	1
4	Vehicle Charger	1
5	Screws	2
6	User Manual	1

NOTE

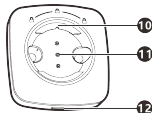
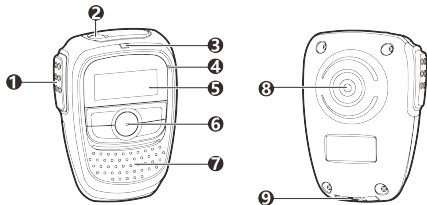
Wireless ring PTT mentioned in this manual is an optional accessory. Please contact us or your local dealer for details.

Product Overview

The mobile radio wireless kit is exquisite, easy to carry, and low-powered, which is applicable to MD65X/MD78X conventional mobile radios with firmware version of V7.00.10.000 and above.


Product Controls

Wireless RSM



No.	Part Name	No.	Part Name
1	Push-to-Talk (PTT) Key	7	Speaker
2	Top Key (TK)	8	Male Buckle
3	LED Indicator	9	USB Port
4	Microphone	10	Female Buckle
5	LCD Display	11	Charging Pin
6	Keypad (including the Left, Right, Power On/Off/Switch, P1, and P2 keys)	12	USB Port

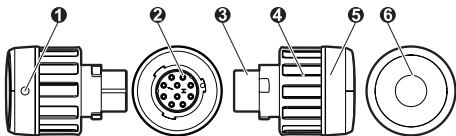
Programmable Keys

For enhanced convenience, you may request your dealer to program the TK  P1 and P2 as shortcuts to certain functions.

NOTE

The TK key is programmed with emergency feature by default (press: Emergency On; long press: Emergency Off). It is programmable by your dealer.

Wireless Audio Adapter



No.	Part Name	No.	Part Name
1	Indication Point	4	Lock Knob
2	POGO Pin	5	LED Indicator
3	Aviation connector	6	PTT/Multi-functional Key

LED Indicator

LED Indication	Wireless RSM Status	Wireless Audio Adapter Status
Flashes red and blue alternatively	Pairing	Pairing
Glowes red	<ul style="list-style-type: none"> ● Transmitting ● Charging 	Transmitting
Flashes red	Low battery power	/
Flashes blue twice rapidly	Connected with no voice	Connected with no voice
Flashes blue once rapidly	Connected with voice	Connected with voice
Flashes blue slowly	Paired but not connected	Paired but not connected

LED Indication	Wireless RSM Status	Wireless Audio Adapter Status
Glowes blue	/	Waiting for pairing and connection of the wireless ring PTT
Glowes green	Fully charged	/

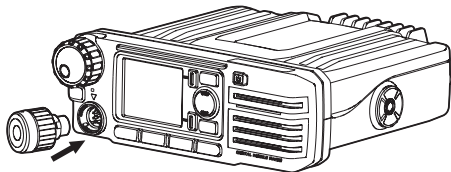
Specifications

Item	Description
Talk Time	> 15 hours
Waterproof and Dustproof Level	IP54
Operating Temperature	-30°C to +60°C
Storage Temperature	-40°C to +85°C

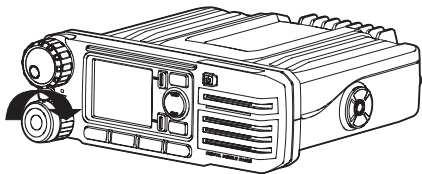
Before Use

Installing Wireless Audio Adapter

1. Make the indication point face upward, adjust the lock knob, and then fix the wireless audio adapter into the RSM connector properly.

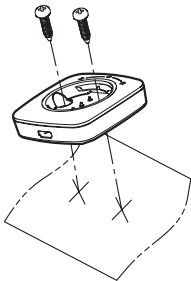


2. Rotate the lock knob clockwise to fasten it.



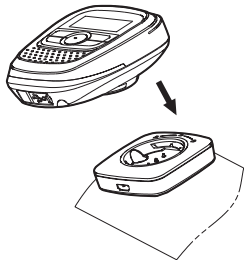
Installing Vehicle Charger

Install the vehicle charger on a suitable place on the vehicle panel, and then use two screws to fix it. See the figure below.



Installing Wireless RSM

Insert the male buckle of the wireless RSM into the female buckle of the vehicle charger, and then fix the wireless RSM against the vehicle charger. See the figure below.



NOTE

To remove the wireless RSM, rotate it clockwise or counterclockwise for an angle equal to or larger than 45°.

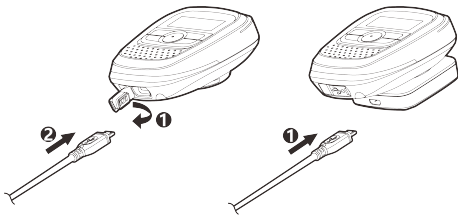
Charging Wireless RSM

NOTE

- If the wireless RSM is idle for a long time, charge it at least once within three months.
- Remove the vehicle power adapter when the wireless RSM is fully charged. Over charged may shorten the life span of the battery.
- If you want to charge the wireless RSM through the cigarette lighter socket, use the vehicle power adapter that is purchased independently.

Before use, charge the wireless RSM as follows:

Use the USB data cable to connect the wireless RSM to the power adapter (5 V/1 A), mobile power bank, or PC.



During charging, the LED indicator tells you the status. For details, see **LED Indicator**.

Basic Operations

Powering On/Off

The wireless RSM will emit a tone upon power-on and power-off.

Power On

- Wireless audio adapter: Turn on the mobile radio.
- Wireless RSM: Long press the **Power On/Off/Switch** key. The LED indicator tells you the status. For details, see **LED Indicator**.

Power Off

- Wireless audio adapter: Turn off the mobile radio.

- Wireless RSM: Long press the **Power On/Off/Switch** key until the LCD displays "Select Power Off", and then press the **Power On/Off/Switch** key.

NOTE

When the LCD displays "Select Power Off", you can use the **Right** key to select "No" and press the **Power On/Off/Switch** key to cancel. Or you can wait for ten seconds for the RSM to return to home screen.

Pairing with and Connecting to the Wireless Audio Adapter

Pairing and connection involve the following situations. Please pair and connect the devices as per actual needs before use. Afterwards, the devices will be connected automatically upon power-on.

NOTE

When the wireless audio adapter is connected to wireless RSM and wireless ring PTT, if any device needs to be changed, the devices must be connected again following the steps below.

Using Wireless Audio Adapter with Wireless RSM

1. Turn off other devices connected to wireless audio adapter and wireless RSM.
2. Turn off the wireless RSM.
3. Turn on the mobile radio.
4. Long press the **PTT/Multi-functional** key of the wireless audio adapter and the **Power On/Off/Switch** key of the wireless RSM respectively until the LED indicator flashes red and blue alternatively to enter pairing mode.

After successful pairing, the wireless RSM will be connected to the wireless audio adapter automatically.

After successful connection, the LED indicator of wireless RSM will flash blue rapidly and the LED indicator of the wireless audio adapter will glow blue (waiting for pairing and connection of wireless ring PTT). About three minutes later, the LED indicator of the wireless audio adapter will flash blue rapidly.

Using Wireless Audio Adapter with Wireless RSM and Wireless Ring PTT

1. Turn off other devices connected to wireless audio adapter, wireless RSM and wireless ring PTT.

2. Turn off the wireless RSM and wireless ring PTT.

3. Turn on the mobile radio.

4. Long press the **PTT/Multi-functional** key of the wireless audio adapter and the **Power On/Off/Switch** key of the wireless RSM respectively until the LED indicator flashes red and blue alternatively to enter pairing mode.

After successful pairing, the wireless RSM will be connected to the wireless audio adapter automatically.

After successful connection, the LED indicator of wireless RSM will flash blue rapidly and the LED indicator of the wireless audio adapter will glow blue (waiting for pairing and connection of wireless ring PTT).

5. Long press the + key and – key of the wireless ring PTT until the LED indicator glows blue to enter pairing mode.

After successful pairing, the wireless ring PTT will be connected

to the wireless audio adapter automatically.

After successful connection, the LED indicators of the wireless audio adapter and the wireless ring PTT will flash blue rapidly.

Using Wireless Audio Adapter with Wireless Ring PTT

1. Turn off other devices connected to wireless audio adapter and wireless ring PTT.

2. Turn off the wireless ring PTT.

3. Turn on the mobile radio.

4. Long press the **PTT/Multi-functional** key of the wireless audio adapter until the LED indicator flashes red and blue alternatively, and then press the **PTT/Multi-functional** key for three times until the LED indicator glows blue to enter wireless ring PTT pairing mode.

5. Long press the + key and – key of the wireless ring PTT until the LED indicator glows blue to enter pairing mode.

After successful pairing, the wireless ring PTT will be connected to the wireless audio adapter automatically.

After successful connection, the LED indicators of the wireless audio adapter and the wireless ring PTT will flash blue rapidly.

Adjusting the Volume

In the home screen, press the **Power On/Off/Switch** key to switch to **Volume** option, and then press the **Right** key to increase the volume or the **Left** key to decrease the volume.

Selecting a Zone

In the home screen, press the **Power On/Off/Switch** key to switch to

Zone option, and then press the **Right** key or the **Left** key to select a zone.

Selecting a Channel

In the home screen, press the **Power On/Off/Switch** key to switch to **Channel** option, and then press the **Right** key or the **Left** key to select a channel.

Transmitting

The wireless RSM can provide you with flexible transmitting operations.

- Pick up the wireless RSM, and then press and hold the **PTT** key of the wireless RSM to transmit.
- Press and hold the **PTT/Multi-functional** key of the wireless audio adapter to transmit.

Troubleshooting

Phenomena	Analysis	Solution
Failed to reconnect automatically.	The device may be out of communication range.	Make sure the device is within communication range and pair again. (Max communication distance is 10 meters when there is no obstacle. Communication distance will be shortened when there is obstacle.)
Noise in communication.	The device may be out of communication range.	Make sure the device is within communication range.
LED indicator does not glow red when pressing and holding the PTT key.		

Phenomena	Analysis	Solution
The wireless RSM cannot be powered on.	The battery power may run out.	Please recharge the wireless RSM.
LED indicator of the wireless RSM does not glow red during charging.	The battery power may run out.	Charge the wireless RSM for 10 to 20 minutes.
	Power adapter may be damaged.	Replace the power adapter.
Key operation of the wireless RSM does not work.	The wireless RSM may crash.	<ol style="list-style-type: none"> 1. Long press the Left, Right and Emergency keys at the same time for two seconds to turn off the wireless RSM. 2. Turn on the wireless RSM again.

If the above solutions cannot fix your problems, or you may have some other queries, please contact us or your local dealer for more technical support.

Care and Cleaning

To guarantee optimal performance as well as a long service life of the product, please follow the tips below.

Product Care

- Do not pierce or scrape the product.
- Keep the product far away from substances that can corrode the circuit.
- Cover the charging connector after charging.

Product Cleaning

CAUTION

Before cleaning, turn off the product.

- Clean up the dust and fine particles on the product surface and charging piece with a clean and dry lint-free cloth or a brush regularly.
- Use neutral cleanser and a non-woven fabric to clean the keys and front case after long-time use. Do not use chemical preparations such as stain removers, alcohol, sprays or oil preparations, so as to avoid surface case damage.
- Make sure the product is completely dry before use.